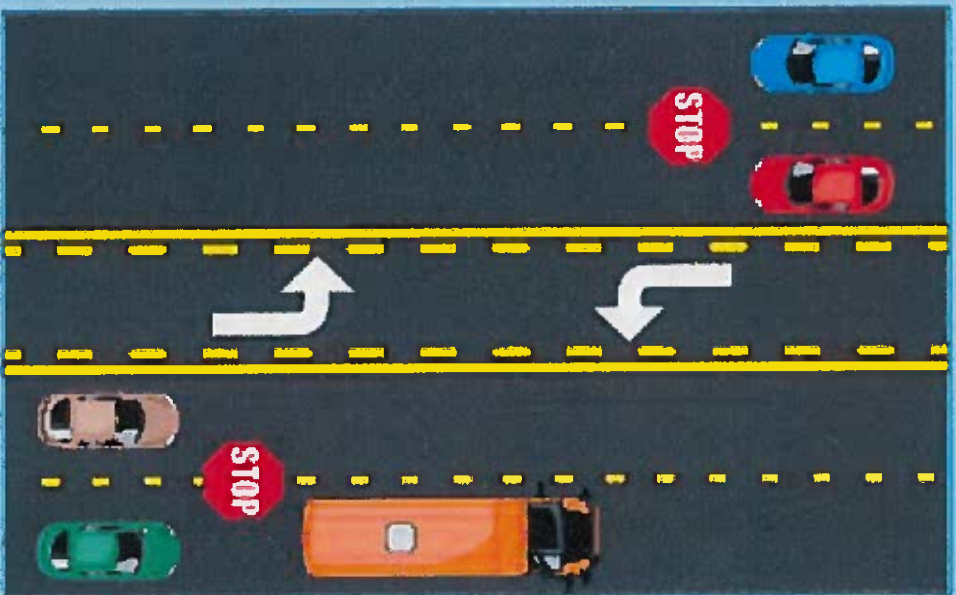


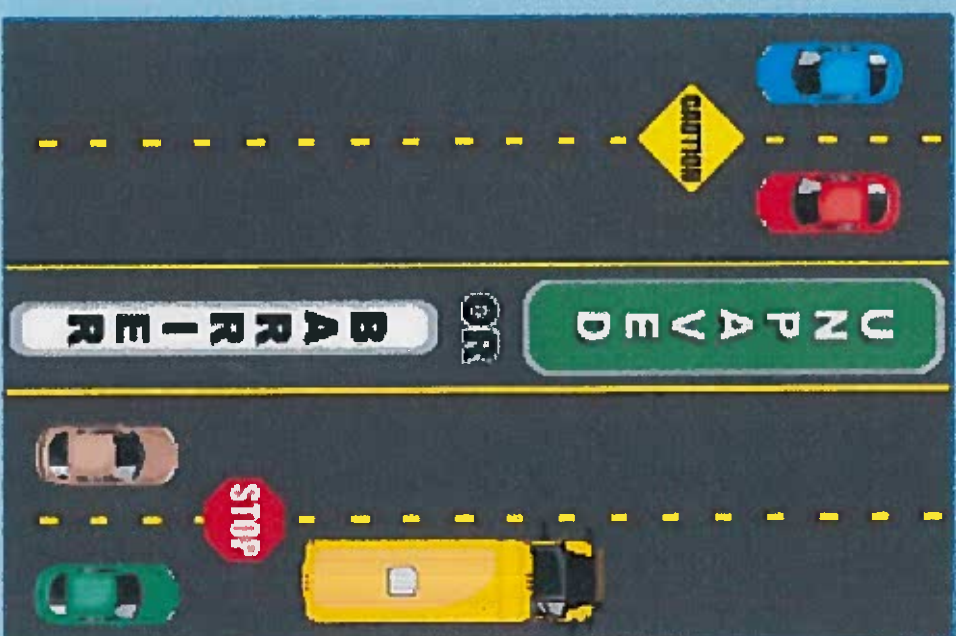
# What is the Law?



**TWO LANE**  
Vehicles traveling  
in both directions  
**MUST STOP.**



**MULTI-LANE – Paved Across**  
Vehicles traveling in both directions  
**MUST STOP.**



**DIVIDED HIGHWAY – With dirt, grass  
or barrier median – Vehicles behind  
MUST STOP. Vehicles traveling in  
opposite direction must use caution.**